

ESD Suppressor

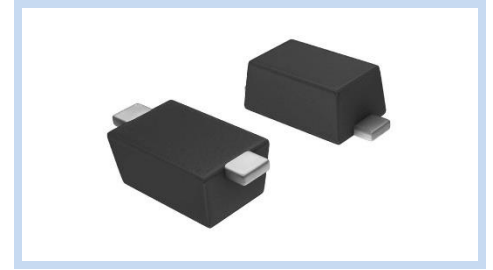
5V 350W SOD-323F

MEP51B350S323F

MERITEK

FEATURE

- IEC61000-4-2 ESD 30KV (Air), 30KV (Contact)
- Peak Power Dissipation of 350W (8/20 μ S)
- ESD Protection for Bi-Directional Channel
- Low Clamping Voltage and Low Leakage Current
- Transient Protects for Power Line or Data I/O Port
- Application: Microprocessor Based Equipments, Peripherals, Portable Instrumentation, Personal Digital Assistants



MECHANICAL DATA

- Case: Molded Plastic, SOD-323F Package
- Terminals : Solderable per MIL-STD-750, Method 2026



ABSOLUTE MAXIMUM RATINGS

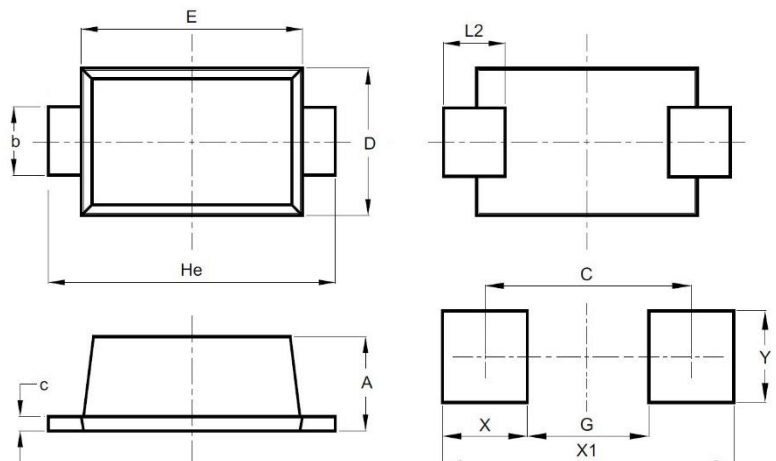
Parameter	Symbol	Value	Unit
Peak Pulse Power (tp = 8/20 μ s waveform)	P _{PP}	350	W
ESD Discharge (IEC61000-4-2)	Air	± 30	KV
	Contact	± 30	
Peak Pulse Current (tp=8/20 μ s waveform)	I _{PP}	24	A
Junction Temperature and Storage Temperature Range	T _J , T _{STG}	-55 to +150	$^{\circ}$ C

ELECTRICAL CHARACTERISTICS

Parameter	Conditions	Symbol	Min	Typ.	Max	Units
Reverse Stand-off Voltage	--	V _{RWM}	-	-	5	V
Reverse Breakdown Voltage	I _R =1mA	V _(BR)	6	-	-	V
Reverse Leakage Current	V _{RWN} =5V	I _R	-	-	10	μ A
Clamping Voltage (tp=8/20 μ s)	I _{PP} =5A	V _C	-	-	9.8	V
	I _{PP} =24A		-	-	14.5	
Off State Junction Capacitance	V _{dc} =0, f=1MHz	C _J	-	-	200	pF

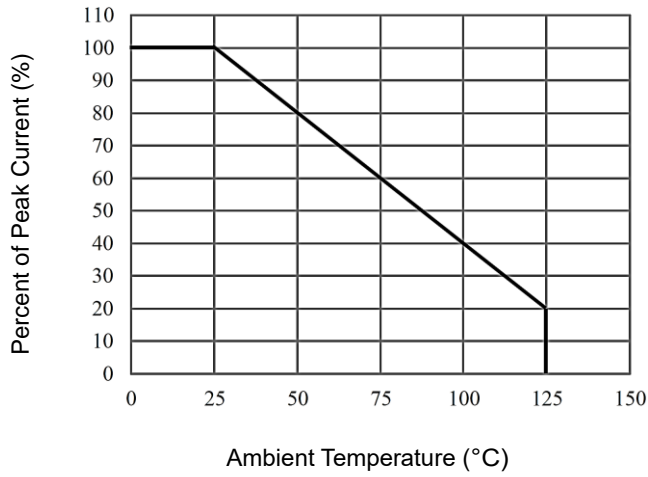
DIMENSIONS

Item	Min (mm)	Max (mm)
A	0.80	1.10
b	0.25	0.40
c	0.10	0.15
D	1.15	1.35
E	1.60	1.80
He	2.30	2.80
C	2.10	
G	1.30	
X	0.80	
X1	2.90	
Y	0.90	

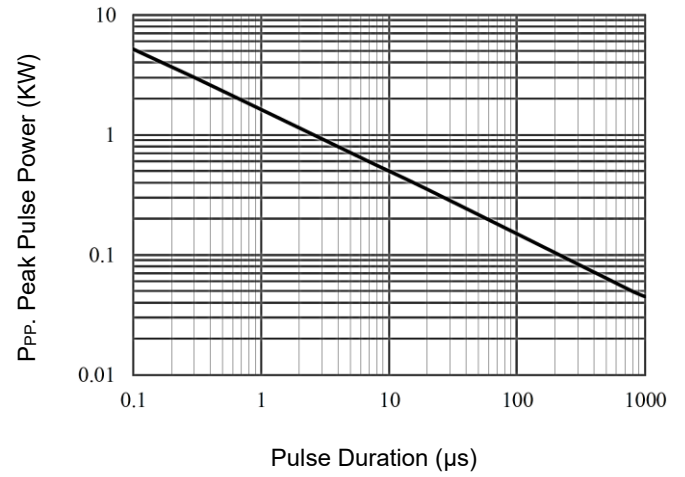


CHARACTERISTIC CURVES

Power Derating Curve



Non-Repetitive Peak Pulse Power vs. Pulse Time



Typical Peak Clamping Voltage

