

Cement Resistor Radial Leaded type

SQM Series

MERITEK

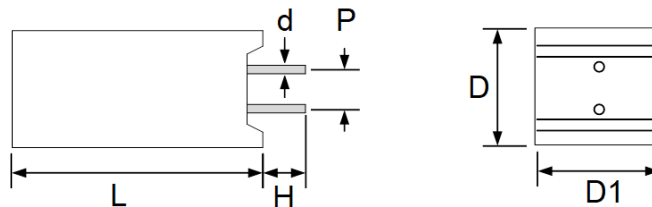
FEATURE

- Excellent Stability in High Temperature, Resistance to Humidity
- Excellent Pulse Load Capability
- Flameproof Ceramic Case
- Super Heat Dissipation



ELECTRICAL CHARACTERISTICS

Power Rating	Dimension (mm)						Resistance Range (Ω)		Max Working Voltage (V)
	L ± 0.5	H ± 1.0	D ± 1.0	D1 ± 1.0	P ± 1.5	d ± 0.03	Wire Wound Resistor	Metal Oxide Resistor Type	
2W	20	5	11.5	7.5	5.5	0.65	0.01~50	51~50K	150V
3W	25	5	12	8.5	5.5	0.80	0.01~50	51~50K	300V
5W	25	5	13	9	5.5	0.80	001~50	51~50K	350V
7W	39	5	13	9	5.5	0.80	0.01~100	101~47K	500V
10W	51	5	13	9	5.5	0.80	0.01~100	101~47K	750V
10WS	35	5	16	12	8.0	0.80	0.01~100	101~47K	750V



PART NUMBERING SYSTEM

SQM 10W R100 J
(1) (2) (3) (4)

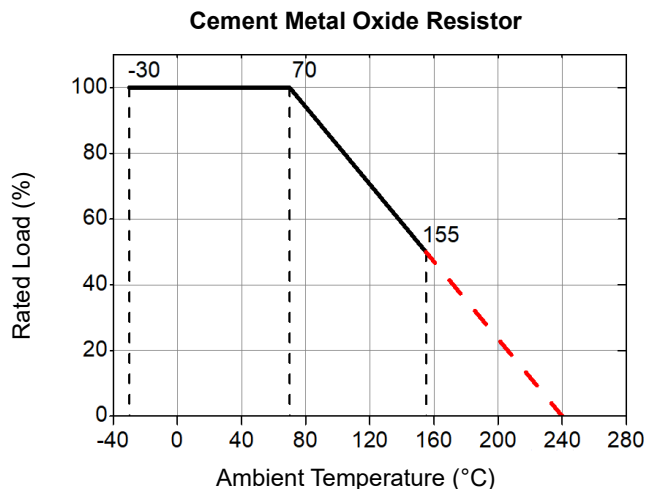
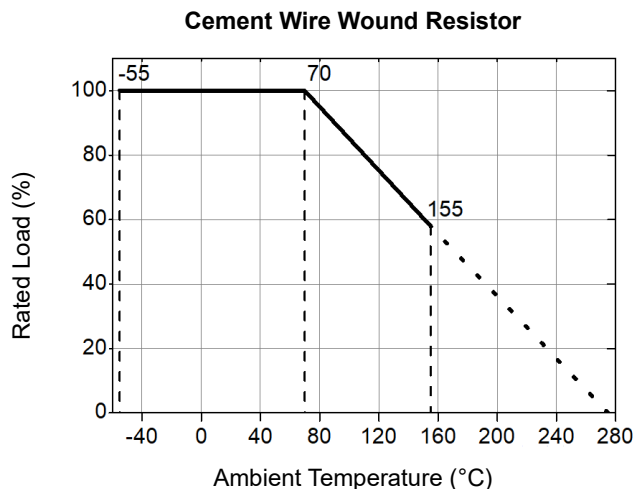
No	Item	Code	Description	
(1)	Product Code	SQM	Cement Resistor Series, Radial Leaded Type	
(2)	Power Rating	10W	10W at 70°C	2W, 3W, 5W, 7W, 10WS
(3)	Resistance	R100	R100: 0.10 Ω	R010: 0.01 Ω ~ 5600: 5600 Ω
(4)	Tolerance	J	J: $\pm 5\%$	F: $\pm 1\%$, G: $\pm 2\%$, K: $\pm 10\%$,

Cement Resistor Radial Leaded type

SQM Series

MERITEK

POWER DERATING CURVES



RELIABILITY TEST CONDITION AND REQUIREMENT

Test	Condition	Wire wound	Metal Oxide
Operating Temperature Range	Wire wound: -55°C to +155°C, Metal Oxide: -30°C to +155°C,	All type	All type
T.C. R	Resistance at Room Temperature and Room Temperature +100°C	±400ppm	±200ppm
Dielectric Withstanding Voltage	Wire wound: 1000V max, Metal Oxide: 1500V max	No Mechanical damage or breakdown	
Endurance	70°C at RCWV for 1000 hrs. (1.5 hrs. ON, 0.5 hrs. OFF)	±(5%+0.05Ω)	±(1.5%+0.05Ω)
Dame Heat Steady State	40±2°C 90~95%RH for 1000 hrs. (1.5 hrs. ON, 0.5 hrs. OFF)	±(5%+0.05Ω)	±(1.5%+0.05Ω)
Short Time Overload	10*RCWV for 5 seconds	±(2%+0.05Ω)	±(0.25%+0.05Ω)
Pulse Overload	4*RCWV for 10000 Cycles (1 seconds ON, 25 seconds OFF)	±(1%+0.05Ω)	±(1%+0.05Ω)
Solderability	235±5°C for 2±1 seconds	90% Min Coverage	
Resistance to Soldering Heat	260±5°C for 2±1 seconds, leave for 3 hours before test	±(1%+0.01Ω)	±(1%+0.01Ω)

Notes:

1. Reference Standard: JIS-C5202

2. Rated Continuous Working Voltage (RCWV) = $\sqrt{\text{Power.Rating} * \text{Resistance.Value}}$

*Specifications subject to change without notice.